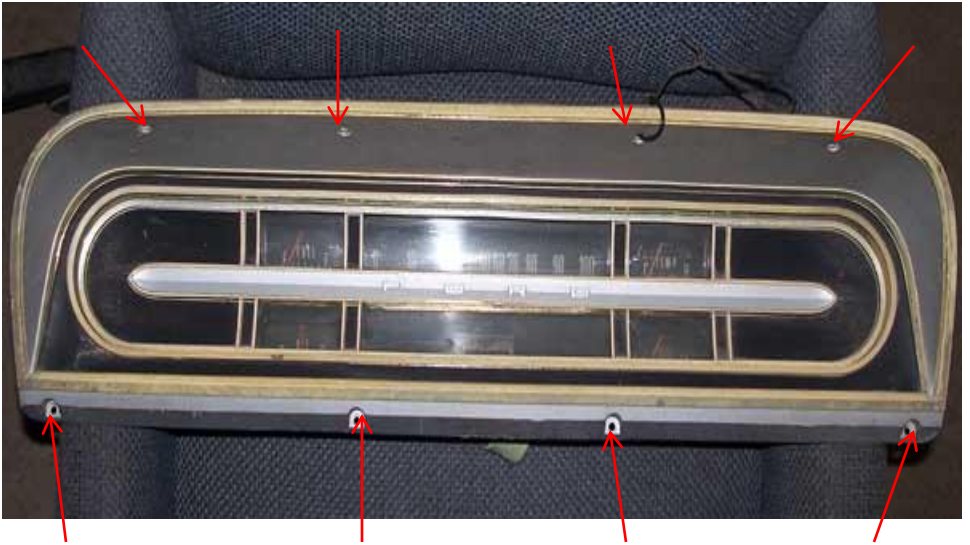




1967-1972 FORD TRUCK KIT INSTALLATION INSTRUCTIONS



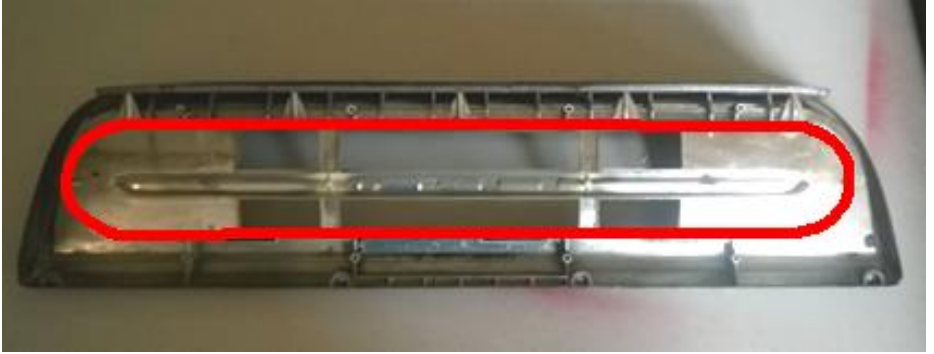
Remove the 8 Philips screws that hold on the front bezel assembly. (on the top and bottom). Disconnect the wiring and the speedometer cable. Remove the front bezel. Retain screws for use in re-installation of bezel.



Remove the gauges from the bezel by removing the 8 mounting screws. Keep the hardware for re assembly. Remove speedometer cable.



Using a dremel or similar cutoff tool, remove the center panel of the dash. This will allow for clearance for the gauges and new wiring. (aftermarket standard) (The front panel will cover minor flaws.) Cut just inside the lip.



ABOVE: Detail of bezel after trimming

BELOW: Center portion removed, panel refinished as needed with paint.
(optional)

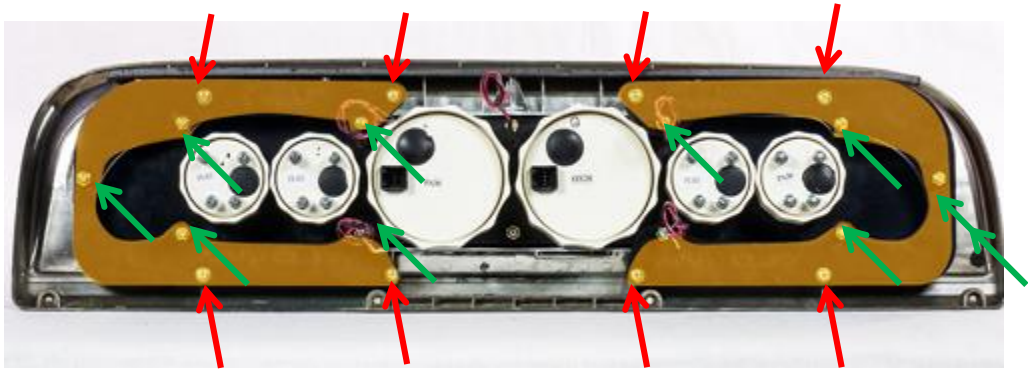


Hi Beam Indicator



Insert the panel from the front, check that the hi beam is at the top so that the icons are right-side up.

BELOW: Rear brackets shown in **ORANGE**



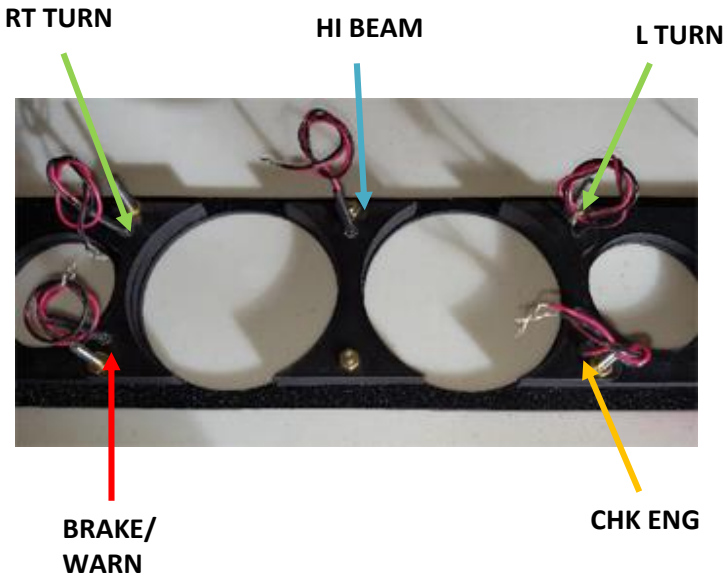
Use the factory screws and attach the rear-mounting brackets **loosely (RED)**

Loosely secure the studs from the back of the cluster through the mounting brackets (GREEN) with #8-32 nuts, washers and lock washers.

Check alignment on the front, then tighten screws and nuts on the back **SNUG**, not overly tight.



Install gauges through the panel holes in any position you like and secure the back clamps. Gauges should be wired according to gauge instruction manuals.



INTEGRATED WARNING LAMPS:

The lamps in this kit are pre-wired 5mm colored LEDs. You may not be able to see the icons when the lights are off, this is normal for a clean look.

Each lamp is set up for 12 Volt operation. Red is power, black is ground

Use your factory manual or probe the wires for connection points and wire instruments according to manual.

Vehicles with battery warning lamp or 3 wire alternator: While most of you will have upgraded to a one-wire alternator by now, those who have not will need to “jump” the charge circuit in the dash or at the alternator for the vehicle to charge properly.

Install the new cluster in place with factory screws and re-install the bezel. Calibrate according to gauge instructions and enjoy your new upgraded dash.



This page is blank



NEW VINTAGE USA
2415 BURDETTE
FERNDALE, MI 48220
248.850.5482
www.newvintageusa.com