



## 95-98 GM SULL SIZE TRUCK BRACKET INSTALATION



## ORIGINAL CLUSTER REMOVAL

### Tools:

- 7mm nut driver, or a 1/4" 7mm socket and extension with a ratchet.
- Small flathead screwdriver

1. Start off by tilting the steering wheel as low as it can go. Also put the gear selector all the way down into 1. (You will need to have the key on to get it out of park)



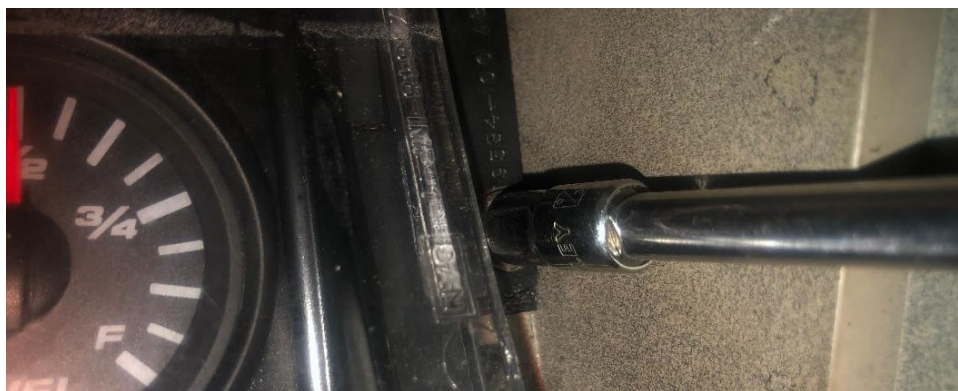
2. Then start pulling off your dash bezel. Take your time, you wouldn't want to break any clips.

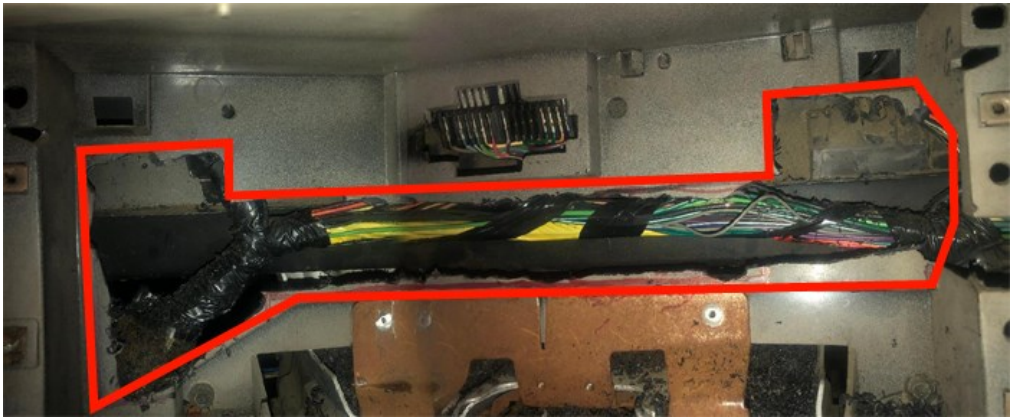
(Be aware of the things that have wires running to them that mount to your bezel. Such as the headlight controls. And the rear hatch popper and wiper controls for you Tahoe boys, or cargo lamp if you have a pickup.. Also if you have push button 4x4, you'll need to unplug those as well.





3. Next is to take out the four 7mm screws that hold the gauge cluster in place. Use the nut driver for this.





4. Trim the back of the dash housing as shown. Be careful of the harness that is behind the cluster. The backing is not structural and nothing attaches to it.

5. Install the OE spacer/lens assembly. We recommend removing the lens, which is easy. It pops off with a screwdriver.



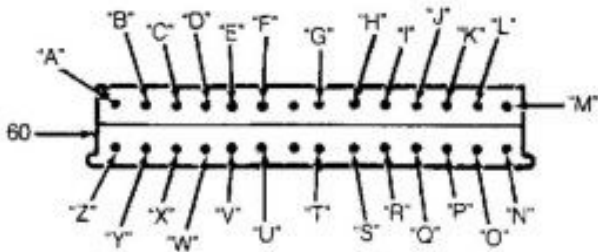


5. Bracket will both to the original mounting points. Installation of the dash is the reverse of dis-assembly

Wire instruments according to gauge instruction booklet and enjoy your new dash look and function! We found the plug schematic below please verify before cutting into any wires!

1995 Chevrolet Pickup K1500

Fig. 1: Identifying Instrument Cluster Connector Terminals  
Courtesy of GENERAL MOTORS CORP.



- |                           |                               |
|---------------------------|-------------------------------|
| A. Battery                | N. Ground                     |
| B. Anti-Lock Brakes       | O. Ignition                   |
| C. Service Engine Soon    | P. Oil Pressure Sender        |
| D. Service Fuel Filter    | Q. Ground                     |
| E. Brake                  | R. Coolant Temperature Sender |
| F. Ignition               | S. Speed Signal Input         |
| G. Traction Active        | T. Tachometer Signal Input    |
| H. Daytime Running Lights | U. Ignition                   |
| I. Low Oil Level          | V. Illumination               |
| J. Low Coolant            | W. Fuel Level Sender          |
| K. Upshift                | X. Fasten Seat Belts          |
| L. Left Turn Signal       | Y. Glow Plugs                 |
| M. High Beam              | Z. Right Turn Signal          |
|                           | 60. 26-Pin Cluster Connector  |

THIS PAGE IS INTENTIONALLY BLANK

THIS PAGE IS INTENTIONALLY BLANK



**NEW VINTAGE USA  
21840 WYOMING PL STE. A  
OAK PARK, MI 48237  
VOICE: 248.850.5482  
FAX: 248.565.8291**

**[www.newvintageusa.com](http://www.newvintageusa.com)  
[service@newvintageusa.com](mailto:service@newvintageusa.com)**